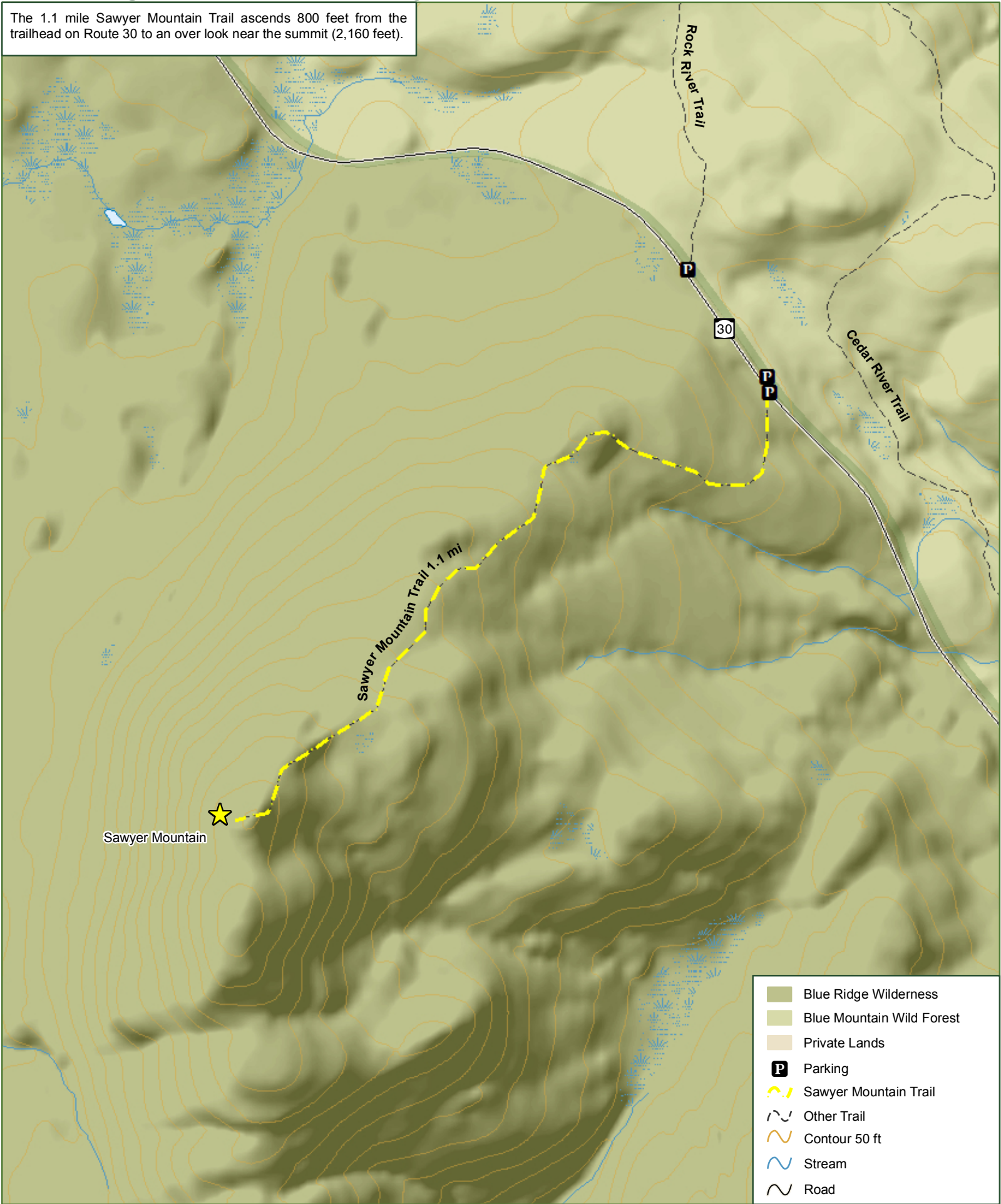


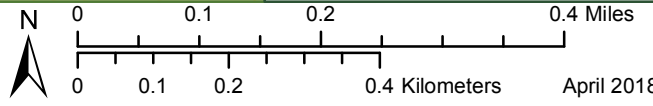
Blue Ridge Wilderness - Sawyer Mountain Trail

The 1.1 mile Sawyer Mountain Trail ascends 800 feet from the trailhead on Route 30 to an over look near the summit (2,160 feet).



Department of Environmental Conservation

Please respect private property. Stay on designated trails
 Practice Leave No Trace Principles
 Emergency contact 518-891-0235



April 2018