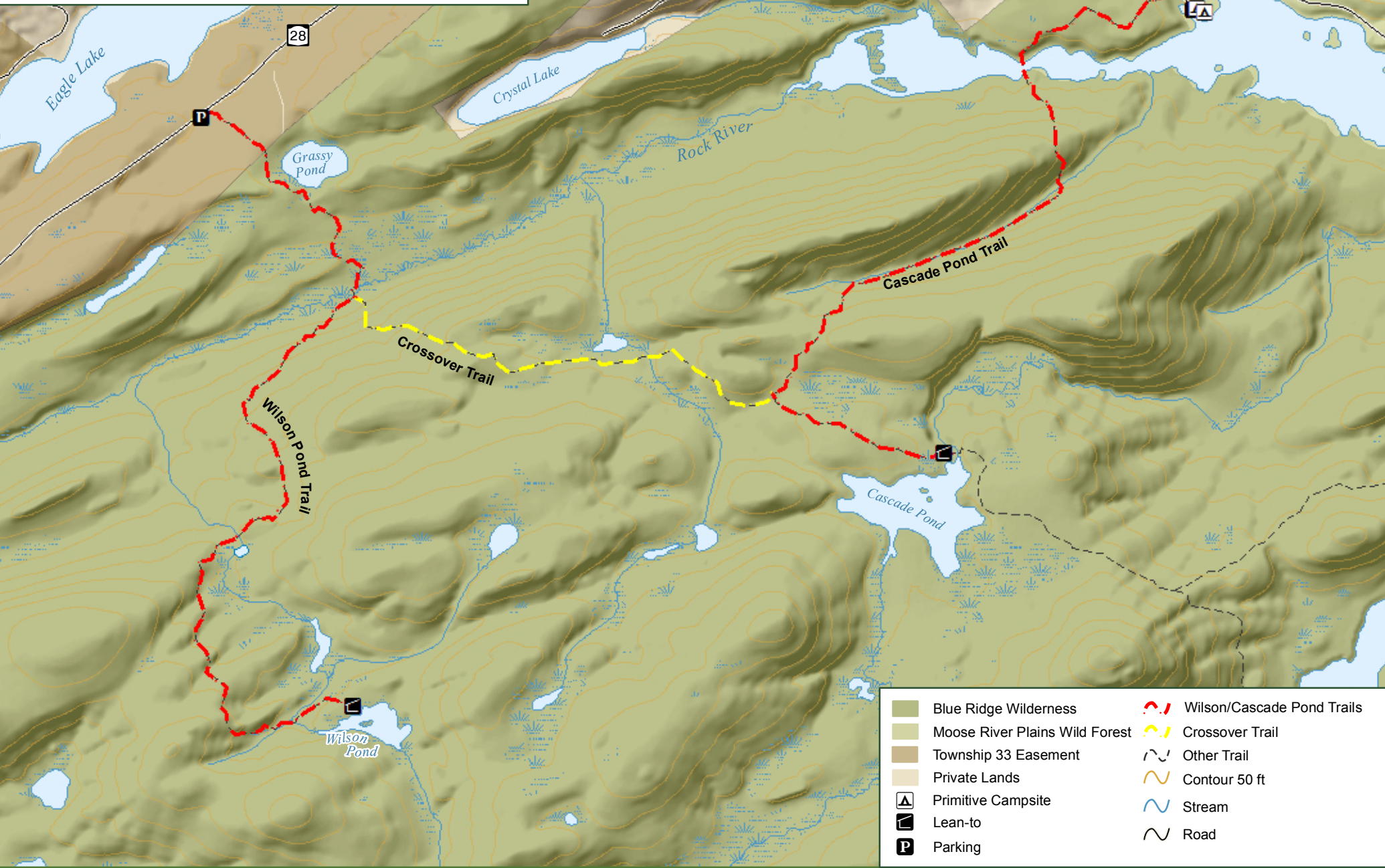


# Blue Ridge Wilderness - Wilson & Cascade Pond Trails

Wilson Pond Trail is a 2.9-mile trail from an unpaved parking area on the south side of Route 28 near Eagle Lake to Wilson Pond and the Wilson Pond Lean-to. Cascade Pond Trail extends 3.5 miles from the trailhead on Durant Road to intersect with the Northville-Placid Trail north of Stephens Pond. Cascade Pond and the Cascade Pond Lean-to are 2.8 miles from the trailhead.



Blue Ridge Wilderness	Wilson/Cascade Pond Trails
Moose River Plains Wild Forest	Crossover Trail
Township 33 Easement	Other Trail
Private Lands	Contour 50 ft
Primitive Campsite	Stream
Lean-to	Road
Parking	